



Eureka Cycling Club	SAFE WORK INSTRUCTION	Clean clubrooms and buildings Routine environmental cleaning	Date issued
			09/07/2020

Location		Equipment Required			PPE Required
Area	Lake Learmonth Yacht Club	Detergent solution	Sanitiser solution or product	Disinfectant solution	 
Activity	Routine environmental cleaning	Mop, bucket, trigger spray, sponge, cloth wipes, paper towel, etc.			

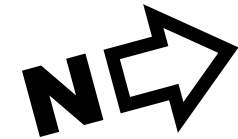
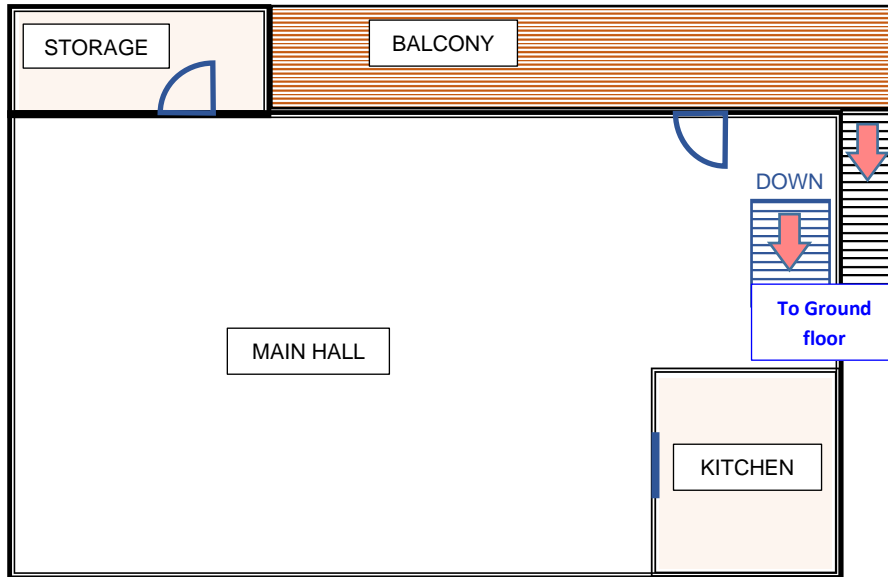
Safety Infection control and social distancing measures have been introduced to combat the spread of the COVID-19 virus and protect all Eureka Cycling Club members and other persons conducting a business or undertaking at the Lake Learmonth Yacht Club.

Process	Surface clean	Full clean
<ol style="list-style-type: none"> Cleaning, sanitising and disinfectant regimen performed: <ul style="list-style-type: none"> at the end of an activity period (under 6 hrs duration) at least once per six hours of an activity period Prepare cleaning, sanitising and disinfectant solutions and materials <ul style="list-style-type: none"> ✓ Suitable location and PPE – as per Safety Data Sheet ✓ As per manufacturer’s instructions Perform systematic routine environmental clean of each section including Level 1 spaces, ground floor areas and external spaces used within the compound, during the activity: <ol style="list-style-type: none"> main hall kitchen amenities – changerooms, showers, toilets balcony storage Perform housekeeping: <ul style="list-style-type: none"> ✓ Clean equipment and store for next use ✓ Dispose of waste materials to general rubbish bin 	Clean and sanitise all: <ul style="list-style-type: none"> building / shed door handles light / fan switches handrails on stairs table and bench tops chair arms and backs drawer handles sink / basin taps urn levers fridge / freezer doors oven / food warmer / microwave, etc. handles soap and sanitiser dispensers toilet seats / covers toilet / urinal flush buttons 	✓ ALL Surface clean activities
		Clean and sanitise all: <ul style="list-style-type: none"> entrance door glass handrails on balcony sinks and basins toilet pans and urinals showers
		<ul style="list-style-type: none"> empty waste bins and replace bin liners
		<ul style="list-style-type: none"> replenish consumables – toilet rolls, soap and sanitiser dispensers, urinal sanitisers, etc.
		<ul style="list-style-type: none"> sweep and/or vacuum floors mop hard floors with disinfectant solution

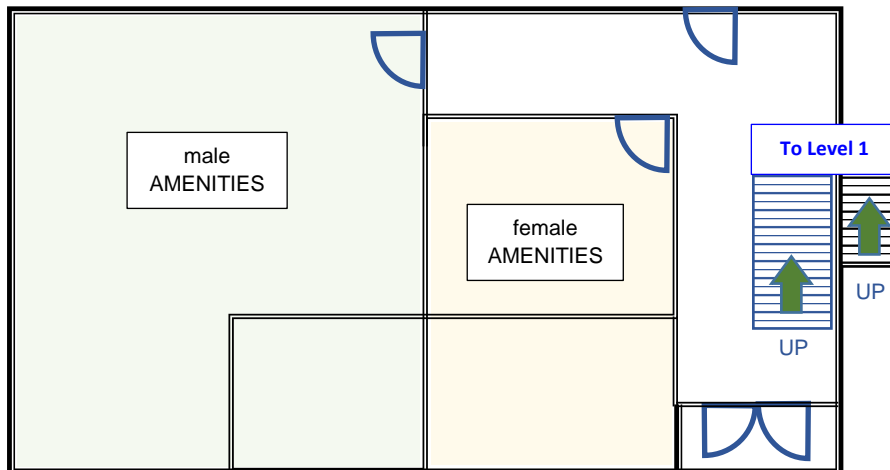
Knowledge **Cleaning** is performed with a suitable **detergent solution**. **Clean** and **sanitise** may be performed with a product suitable or both purposes. **Sanitising** is performed with a suitable **sanitiser solution** or **product**. Sanitise = 30 seconds agent to surface contact. **Disinfecting** is performed with a suitable **disinfectant solution**. Disinfect = 10 minutes agent to surface contact

Lake Learmonth Yacht facilities map

Level 1



Ground floor



Boat Shed

